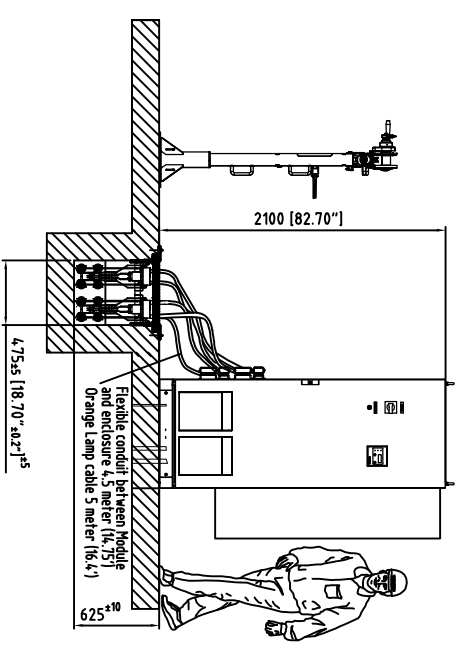
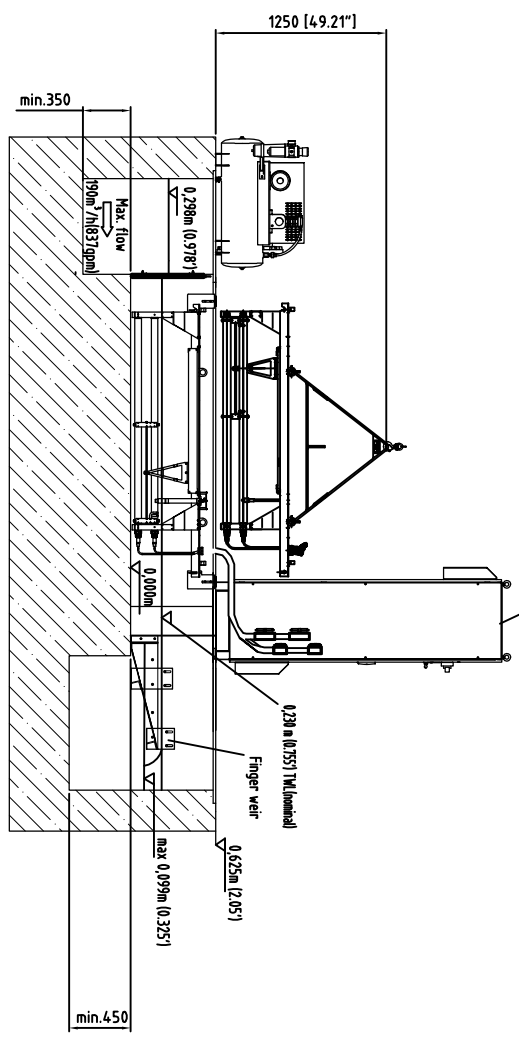


Item	Description	Drawing #	Notes	Material
1	Electrical cabinet (Standard)		TYPE 12 /IP54	Painted sheet steel
	Electrical cabinet (Optional)		TYPE 4X /IP64 fan cooled	stainless steel
2	Electrical cabinet (Optional)	U71-079-011	TAK 2-2	ASTM304 (1.4301)
3	Baffle plate kit	U-13688	TAK X-2	ASTM304 (1.4301)
4	Finger wear	U-68100	190m ² /hr (120 MGD)	ASTM316 (1.4571)
5	UV Module (Standard)		Two per Bank	ASTM316 (1.4571)
	with UV Sensor (Optional)		Replaces one standard Mod.	ASTM316 (1.4571)
	with wiper system (Optional)		Two per Bank (replace Std.)	ASTM316 (1.4571)
6	Compressor (Optional)		Located under enclosure	ASTM316 (1.4571)
7	Crane (Optional)		For UV module lifting	Power coated Steel
8	Concrete Channel		By Others	
9	Channel cover		By Others	
10	Spacer		By Others	ASTM304 (1.4301)
11	Anchor bolts		By Others	ASTM304 (1.4301)

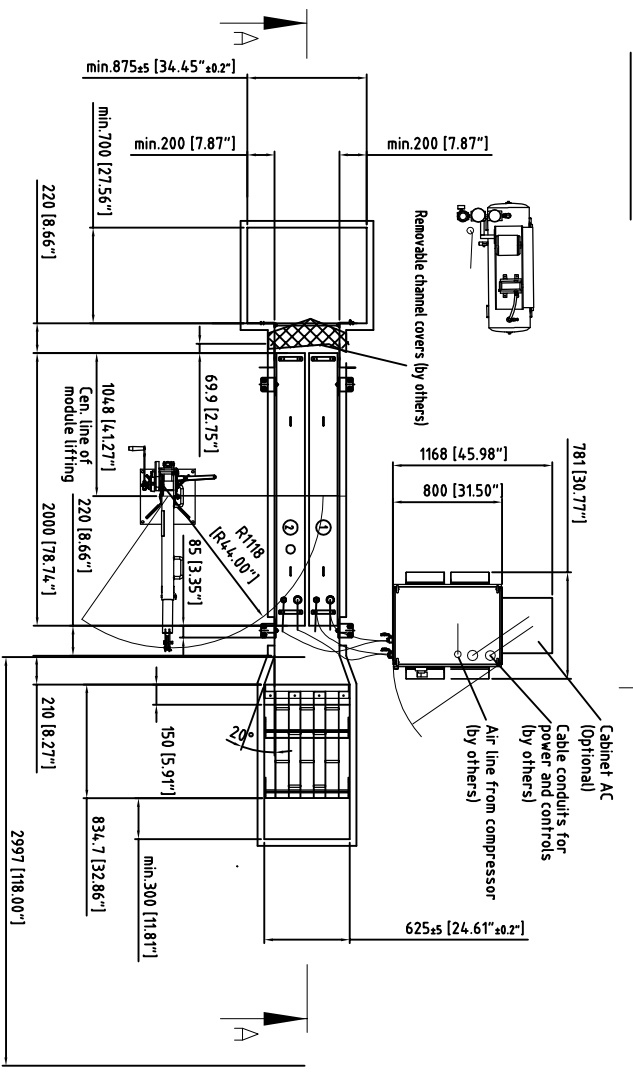
Section B-B



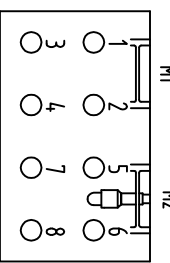
Section A-A



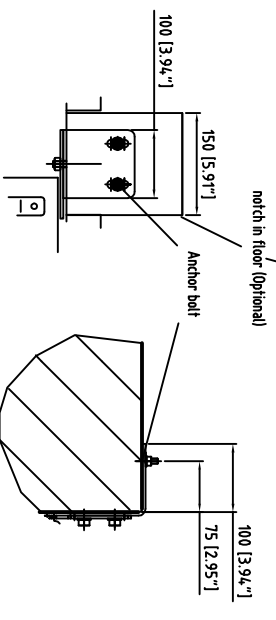
PLAN VIEW



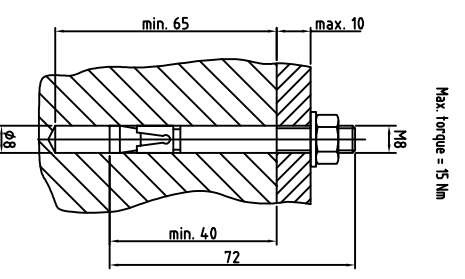
LAMP LOCATION



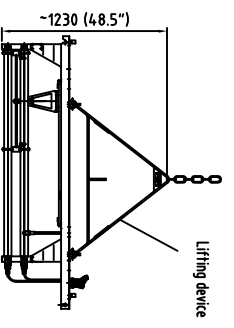
Bank Support Detail



Example anchor bolt fixing:



Module lifting Detail



TAK SMART GENERAL NOTES:

- The dimensions given on this drawing are required to ensure correct installation operation and performance of the WEDECO UV equipment. All Modifications from this drawing must be approved by WEDECO.
- The most Critical dimensions (channel width, module placement, and weir height) are controlled within the UV channel assembly. Installing contractor must ensure channel assembly is level ($\pm 5mm$ [3/16\"/>

NOT FOR CONSTRUCTION!

FOR DISCUSSION PURPOSES ONLY!

TAK SMART CONCRETE CHANNEL		GENERAL ARRANGEMENT DRAWING	
1	DATE: 01/15/2010	1	DATE: 01/15/2010
2	DATE: 01/15/2010	2	DATE: 01/15/2010
3	DATE: 01/15/2010	3	DATE: 01/15/2010
4	DATE: 01/15/2010	4	DATE: 01/15/2010
5	DATE: 01/15/2010	5	DATE: 01/15/2010
6	DATE: 01/15/2010	6	DATE: 01/15/2010
7	DATE: 01/15/2010	7	DATE: 01/15/2010
8	DATE: 01/15/2010	8	DATE: 01/15/2010
9	DATE: 01/15/2010	9	DATE: 01/15/2010
10	DATE: 01/15/2010	10	DATE: 01/15/2010
11	DATE: 01/15/2010	11	DATE: 01/15/2010
12	DATE: 01/15/2010	12	DATE: 01/15/2010
13	DATE: 01/15/2010	13	DATE: 01/15/2010
14	DATE: 01/15/2010	14	DATE: 01/15/2010
15	DATE: 01/15/2010	15	DATE: 01/15/2010
16	DATE: 01/15/2010	16	DATE: 01/15/2010
17	DATE: 01/15/2010	17	DATE: 01/15/2010
18	DATE: 01/15/2010	18	DATE: 01/15/2010
19	DATE: 01/15/2010	19	DATE: 01/15/2010
20	DATE: 01/15/2010	20	DATE: 01/15/2010