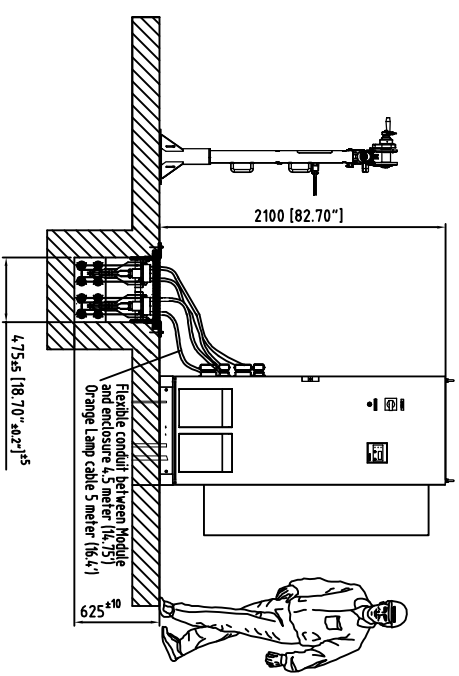
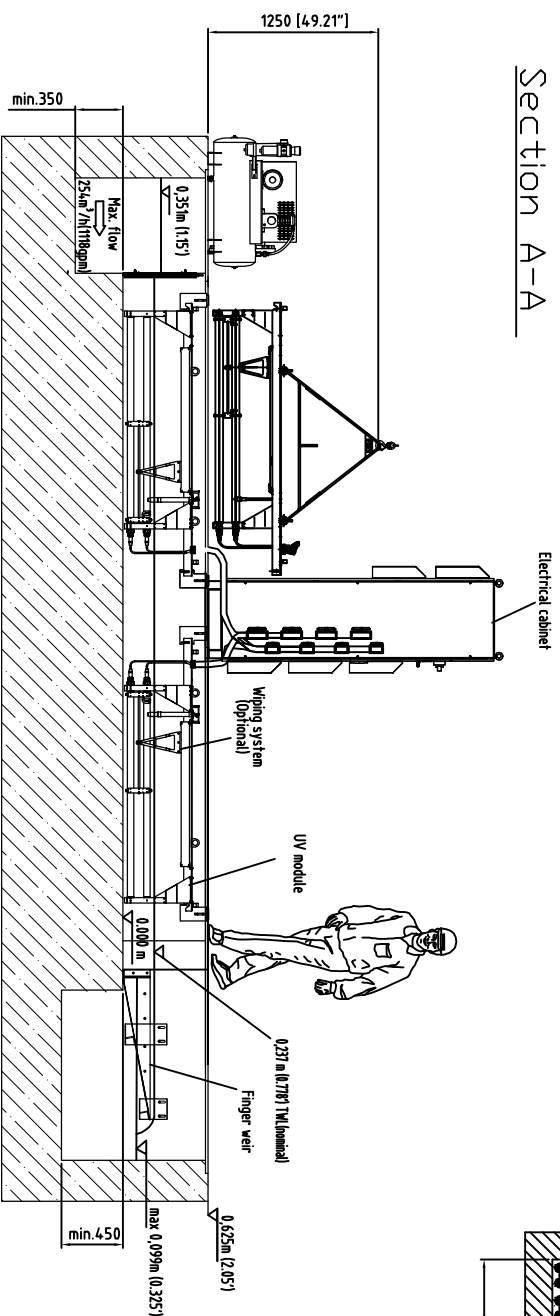


Item	Description	Drawing #	Notes	Material
1	Electrical cabinet (Standard)		TYPE 12/PP54	Painted sheet steel
2	Electrical cabinet (Optional)		TYPE 4X/PP64 fan cooled	stainless steel
3	Electrical cabinet (Optional)	U21-0179-011 TAK 2-2	TYPE 4X/PP64 with AC	ASTM304 (1.4301)
4	Baffle plate kit	U-13688	TAK X-2	ASTM304 (1.4301)
5	Bank Support kit		250 ² /hr (158 MGD)	ASTM304 (1.4301)
6	Finger Weir		Two per Bank	ASTM316 (1.4571)
7	UV Module (Standard)		Replaces Two standard Mod.	ASTM316 (1.4571)
8	UV Module (Optional)		Two per Bank (replace Std)	ASTM316 (1.4571)
9	with Wiper&Sensor(Optional)		Replaces one Wiped Mod.	ASTM316 (1.4571)
10	Compressor (Optional)		Located under enclosure	Power coated Steel
11	Cone (Optional)		For UV module lifting	
12	Concrete Channel		By Others	
13	Channel cover		By Others	
14	Spacer		By Others	ASTM304 (1.4301)
15	Anchor bolts		By Others	ASTM304 (1.4301)

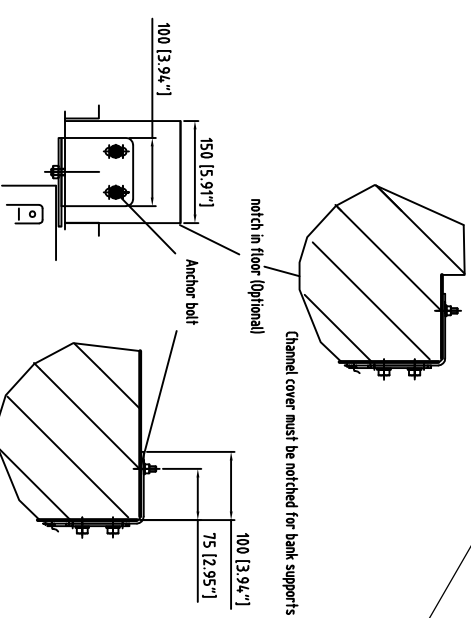
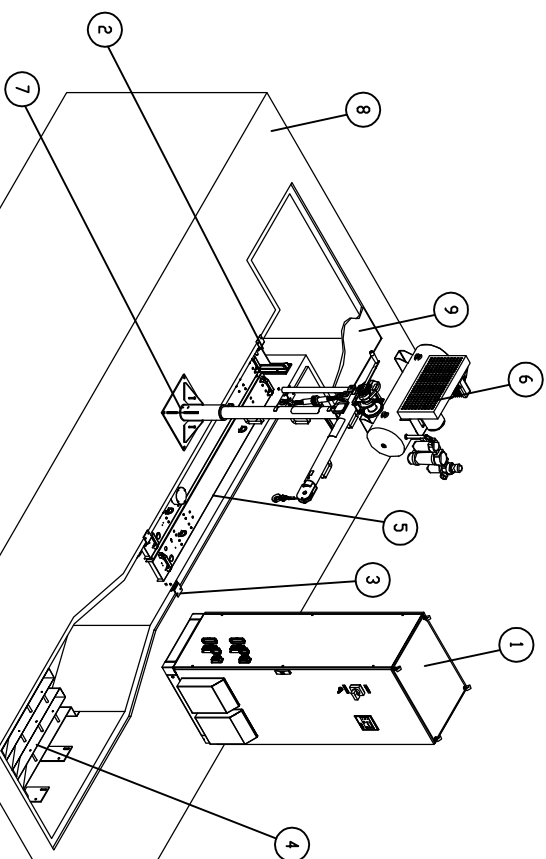
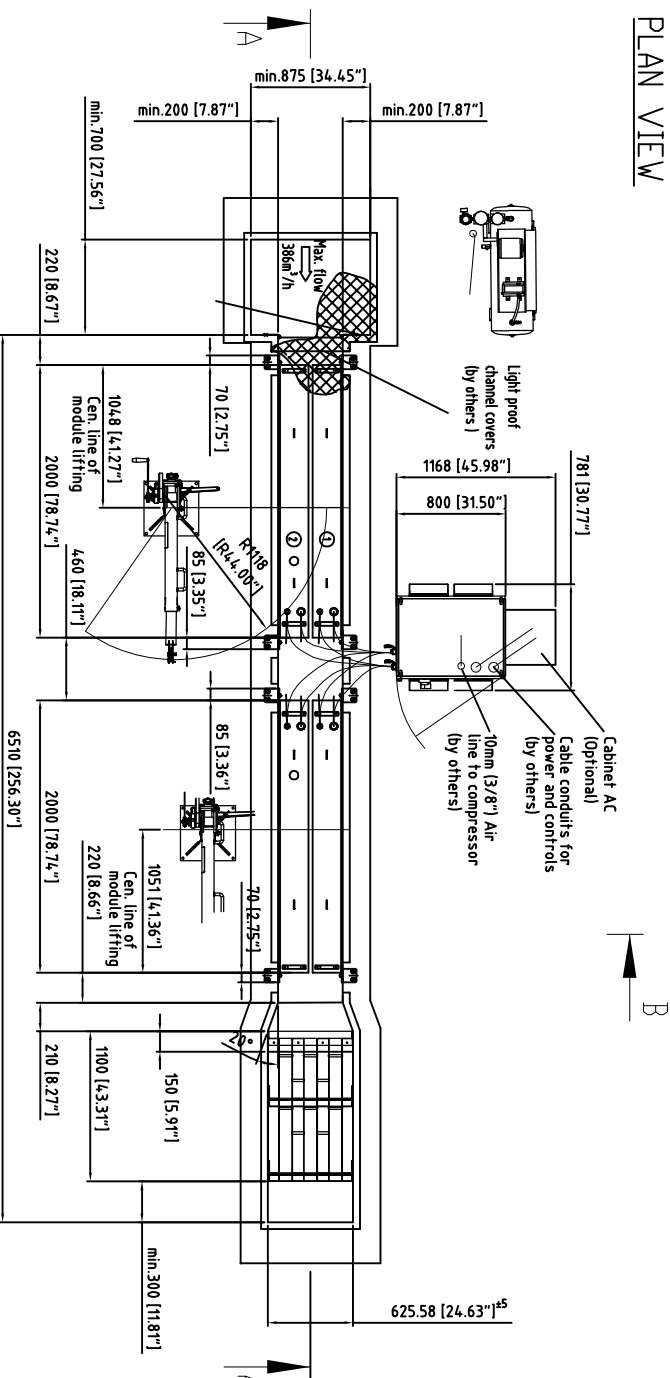
Section B-B



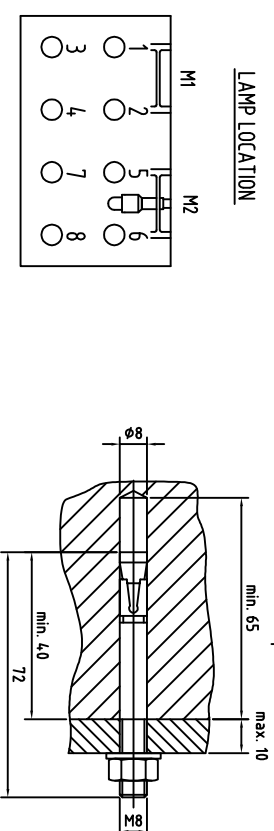
Section A-A



PLAN VIEW

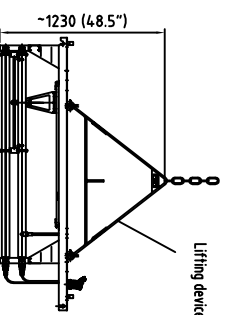


Bank Support Detail



LAMP LOCATION

Example anchor bolt fixing:



Module lifting Detail

TAK SMART GENERAL NOTES:

- The dimensions given on this drawing are required to ensure correct installation operation and performance of the WEDECO UV equipment. All Modifications from this drawing must be approved by WEDECO.
- The most Critical dimensions (channel width, module placement, and weir height) are controlled within the UV channel assembly. Installing contractor must ensure channel assembly is level (± 5mm [3/16"]) across entire length and width).
- All site related design, labor and materials to be provided by others per contract documents. To meet general anchor bolt requirement, concrete installation and quality shall meet or exceed AC 318 / DIN1045 - B35.
- All civil tolerances are ± 1/2" (6 mm) unless otherwise shown.
- Type 12/PP54 (fan cooled) Electrical enclosure to be located in a climate controlled building (supplied by others). Ambient Temp. 5 to 40°C (41 to 104°F)
- Type 4X /PP66 enclosure fan cooled. Ambient Temp. -20 to 40°C (-4 to 104°F)
- Type 4X /PP66 enclosure with AC Ambient Temp. -20 to 59°C (-4 to 127°F)
- Before installation of the UV equipment, channel & piping must be clean of debris. Debris like sand or stones may damage to UV lamps.
- All flow isolation is supplied by others if required.
- All field wiring and conduits required to connect power and controls to the electrical enclosure and the air compressor shall be sized, supplied, and installed by others. All governing local/state and national electrical codes/regulations apply (for example but not limited to state, local, CE, NEC, CUL).
- Lifting device for individual module (optional). One per bank required.
- All equipment shall be locked in accordance with all state local and national electrical codes and per dimensions shown on General Arrangement drawing.
- Instrument quality quality compressed air required for the wiping system (optional) 11PS (21 CFM) @ 4.5-5.5BAR (65-80 PSI) indoor and outdoor compressors (optional).
- Protect your eyes and skin against UV light. Extended exposure causes sun burn and eye irritation.
- Field assembly of channel required. All supporting materials, gaskets, hardware, labor and design are supplied by others.
- Installing contractor must provide Temporary bracing inside the channel inserts to prevent deformation as concrete cures.
- The inlet and outlet areas and all piping designed and sized by others. At maximum design flow a 10mm (1/2") free space shall be maintained between the top of the weir and the top effluent level in the outlet chamber.

NOT FOR CONSTRUCTION!

FOR DISCUSSION PURPOSES

ONLY Y1

Project Information		Drawing Information	
Project Name	TAK SMART CONCRETE CHANNEL	Drawing Title	GENERAL ARRANGEMENT DRAWING
Project No.	U-31462-1	Revision	01
Client	U-31462-1	Scale	AS SHOWN
Designer		Date	
Checker		By	
Approver		Checked	