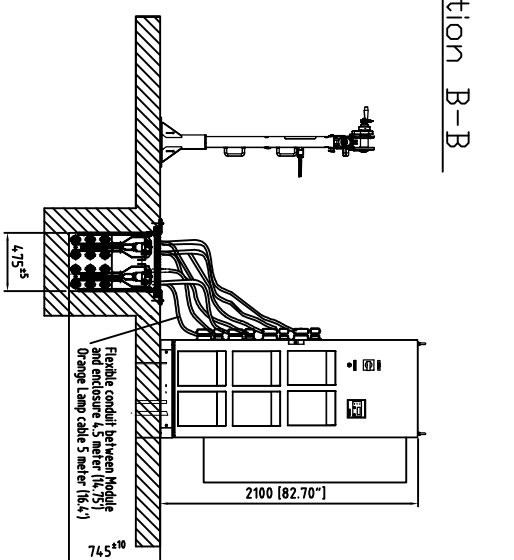
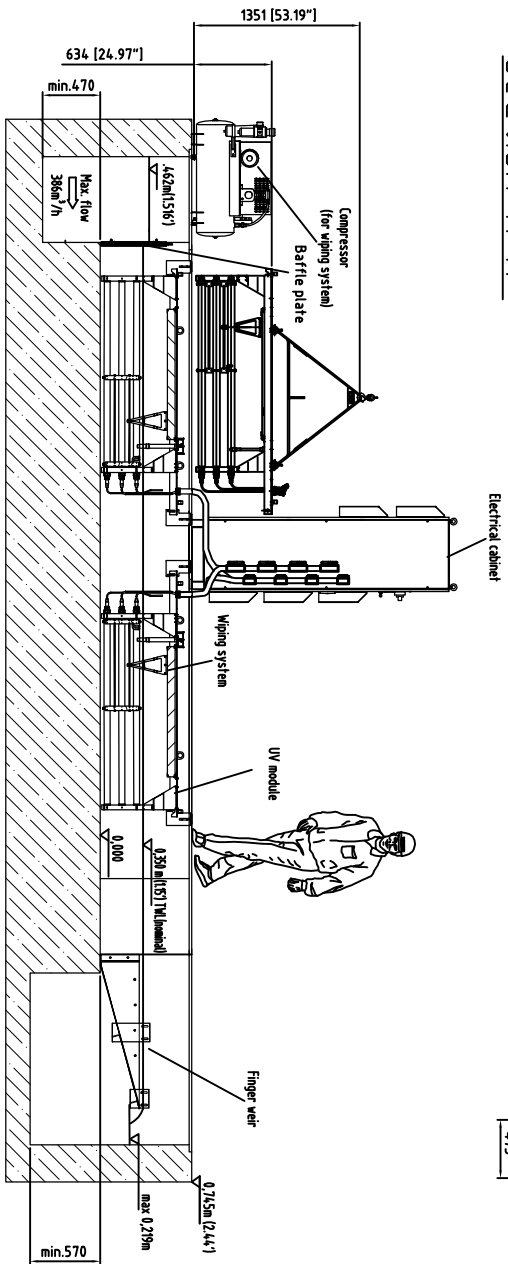


Item	Description	Drawing #	Makes	Material
A	Electrical cabinet Standard		TYPE Q /PS4	Painted steel sheet
1	Electrical cabinet (optional)		TYPE KX /PS6 Fan cooled	stainless steel
2	Finger wear		TAK 3-21F	ASTM A1329H
3	UV Module Standard		Two per UV system optional location	ASTM A157H
4	UV Module Standard		By others	Power coated steel
5	UV Module Standard		By others	Light light recommended
6	Protective channel cover		TAK 3-21F	ASTM A157H
7	Baffle plate (optional)		By others	ASTM A157H
8	Concrete floor		For Wiping system (optional)	
9	Air Compressor (optional)			

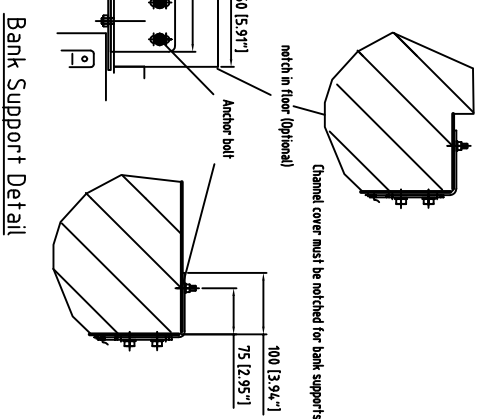
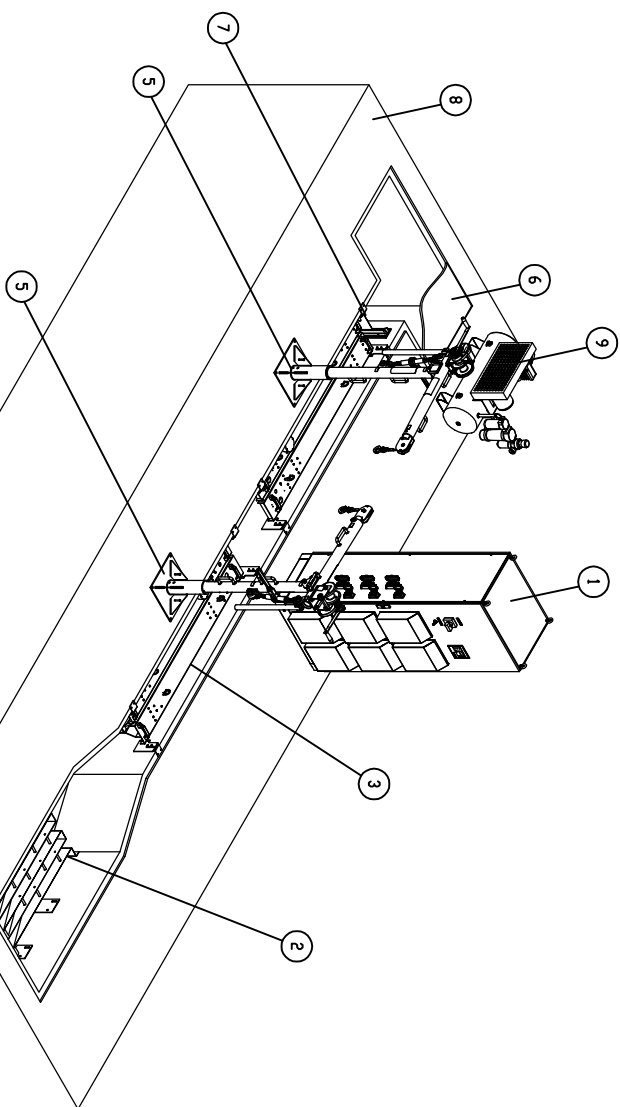
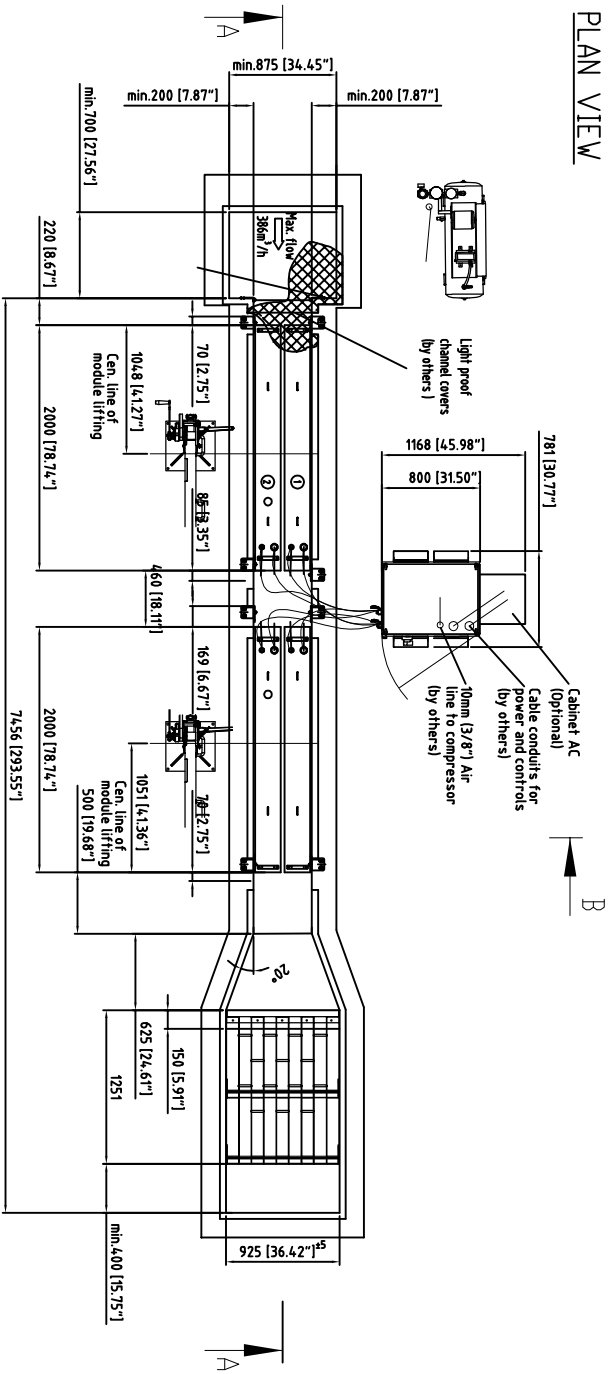
Section B-B



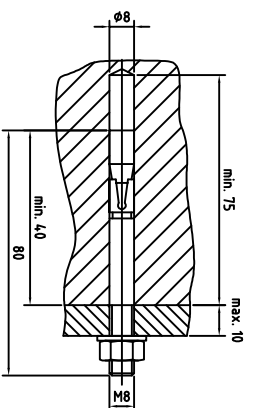
Section A-A



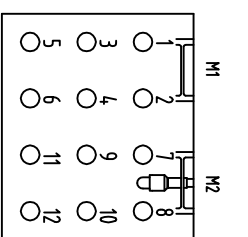
PLAN VIEW



Example anchor bolt fixing:



LAMP LOCATION



TAK SMART GENERAL NOTES:

- The dimensions given on this drawing are required to ensure correct installation of the equipment. All dimensions are in millimeters (mm) unless otherwise stated. All restrictions from this drawing must be approved by MBEEO.
- The most critical dimensions are channel width, module placement, and weir height. Installing contractor must ensure channel is level (± 5mm [3/16\"/>

NOT FOR CONSTRUCTION!

FOR DISCUSSION PURPOSES ONLY!

NO.	REVISION	DATE	BY	CHKD.	APP'D.

**GENERAL ARRANGEMENT DRAWING**  
 TAK SMART 3.202 HE PARIS LIST  
 U-814-63