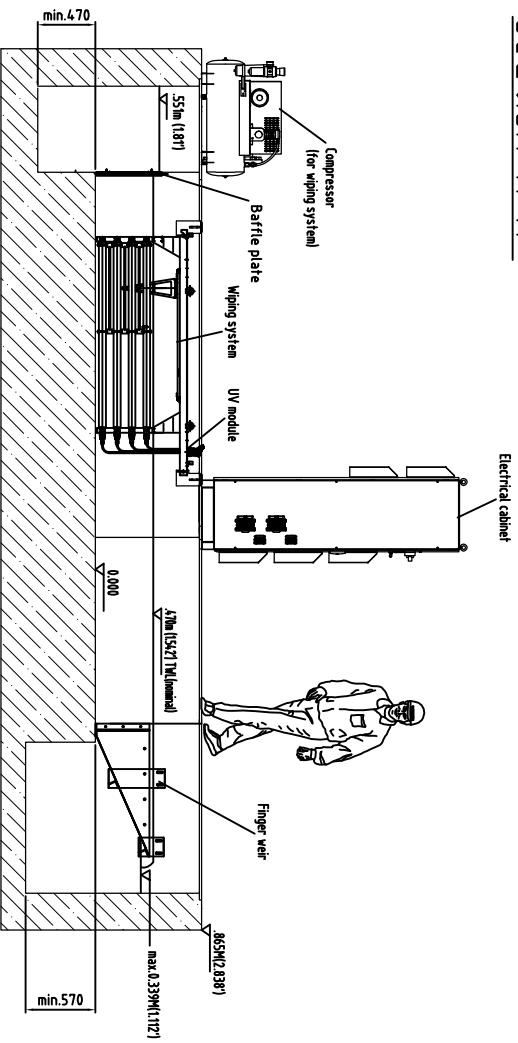
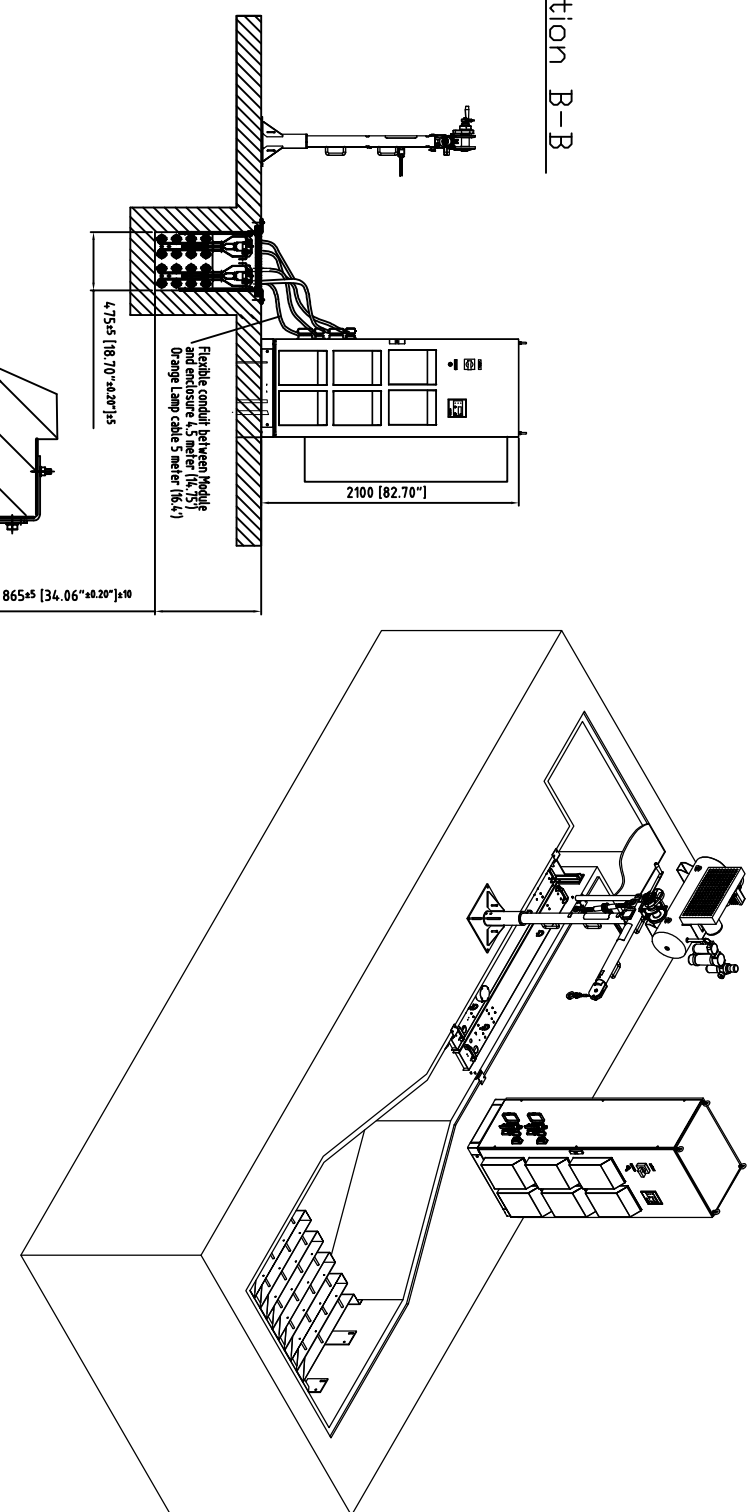


Item	Description	Drawing #	Makes	Material
A	Electrical cabinet (Standard)		TYPE Q /PS4	Painted steel sheet
1	Electrical cabinet (Optional)		TYPE KX /PS6 Fan cooled	stainless steel
2	Finger Vest		TAK K-2	ASTM A1329H
3	UV Module (Standard)		Two per UV system	ASTM A1517H
5	Frame (Optional)		optional locations	Power coated steel
6	Protective channel cover		By others	Light light recommended
7	Baffle plate (Optional)		TAK A-2	ASTM A1517H
8	Concrete floor		By others	
9	Air (Compressor (Optional))		For Wiping system (Optional)	

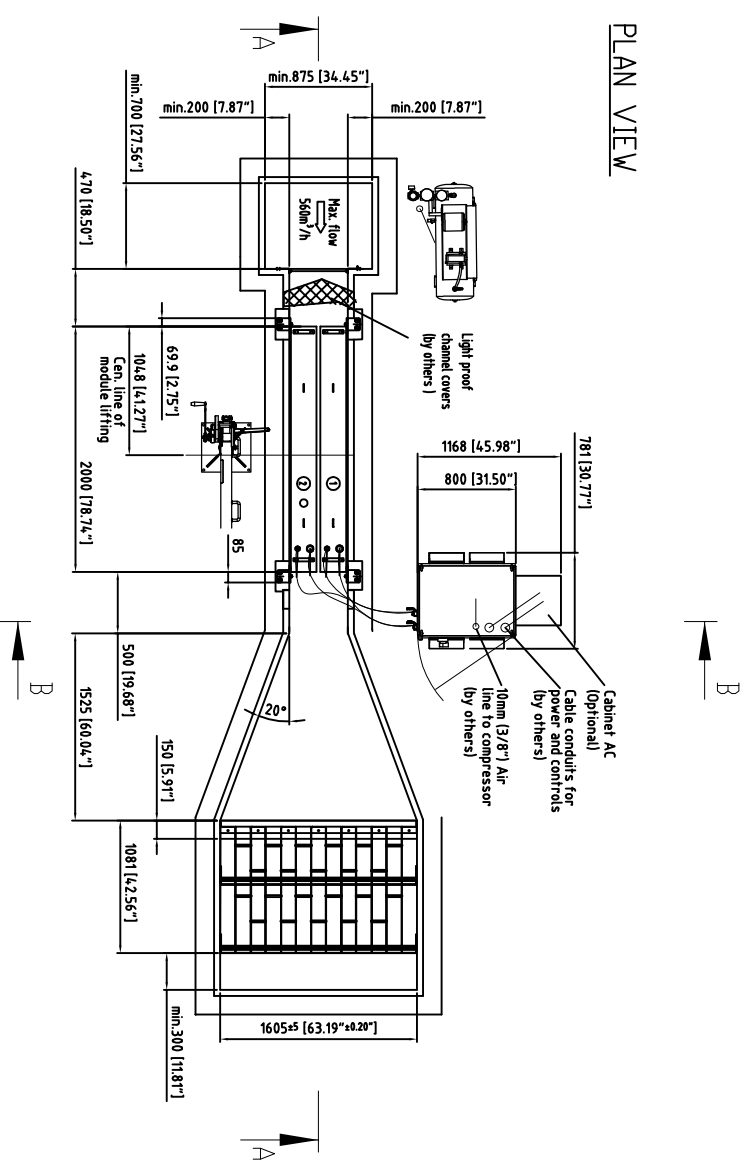
Section A-A



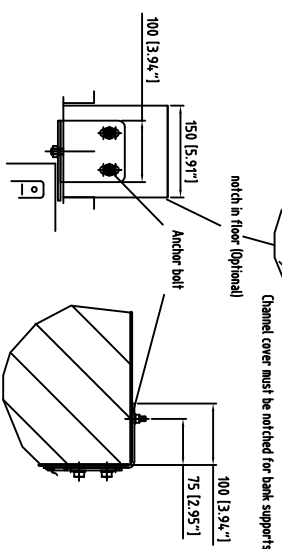
Section B-B



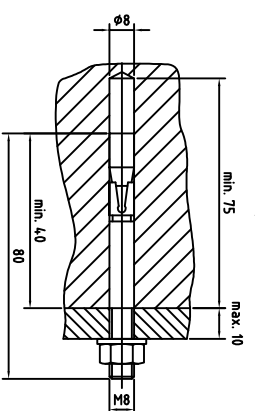
PLAN VIEW



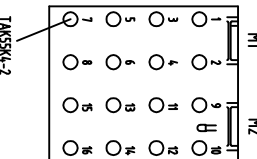
Bank Support Detail



Example anchor bolt fixing:



LAMP LOCATION



TAK SMART GENERAL NOTES:

- The dimensions given on this drawing are required to ensure correct installation of the equipment. All dimensions are in millimeters (mm) unless otherwise stated. All dimensions must be approved by MBEEO.
- The most critical dimensions are channel width, module placement, and weir height. Installing contractor must ensure channel is level (± 5mm [3/16"] across entire length and width).
- All site related design, labor and materials to be provided by others per contract documents. To meet general anchor bolt requirement, concrete installation and quality shall meet or exceed ACI 308 / EN12653-5055.
- All civil tolerances are ± 2" (51mm) unless otherwise shown.
- Type Q2/PS4 (fan cooled) Electrical enclosure to be located in a climate controlled building (supplied by others). Ambient Temp. 5 to 40°C (41 to 104°F) Type KX /PS6 enclosure fan cooled. Ambient Temp. -20 to 40°C (-4 to 104°F) Type KX /PS6 enclosure with AC Ambient Temp. -20 to 50°C (-4 to 122°F)
- Before installation of the UV channel, must be level and clean. Debris and objects like sand may cause damage to lamps.
- All flow isolation is supplied by others if required.
- All field wiring and conduits required to connect power and controls to the electrical enclosure and the air compressor shall be sized, supplied, and installed by others. All governing local/state and national electrical codes/regulations apply (for example but not limited to state, local, CE, NEC, CUL).
- Lifting device for individual module (Optional). One per bank required.
- All equipment shall be located in accordance with all applicable local and national electrical codes and per dimensions shown on General Arrangement drawing.
- Instrument quality quality compressed air required for the wiping system (optional) 1.25 (21 CFM) @ 4.5-5.5BAR (65-80 PSIG)
- Protect your eyes and skin against UV light. Extended exposure causes sun burn and eye irritation.
- Field assembly of channel required. All supporting materials, gaskets, hardware, labor and design are supplied by others.
- Installing contractor must provide Temporary bracing inside the channel inserts to prevent deformation as concrete cures.
- The inlet and outlet areas and all piping designed and sized by others. At maximum design flow a 10mm (3/8") free space must be maintained between the top of the weir and the top of the inlet level in the outlet chamber.

NOT FOR CONSTRUCTION!

FOR DISCUSSION PURPOSES ONLY!

Item	Description	Quantity	Unit
1	Electrical cabinet (Standard)	1	EA
2	Electrical cabinet (Optional)	0	EA
3	Finger Vest	1	EA
4	UV Module (Standard)	2	EA
5	Frame (Optional)	0	EA
6	Protective channel cover	0	EA
7	Baffle plate (Optional)	0	EA
8	Concrete floor	0	EA
9	Air (Compressor (Optional))	0	EA